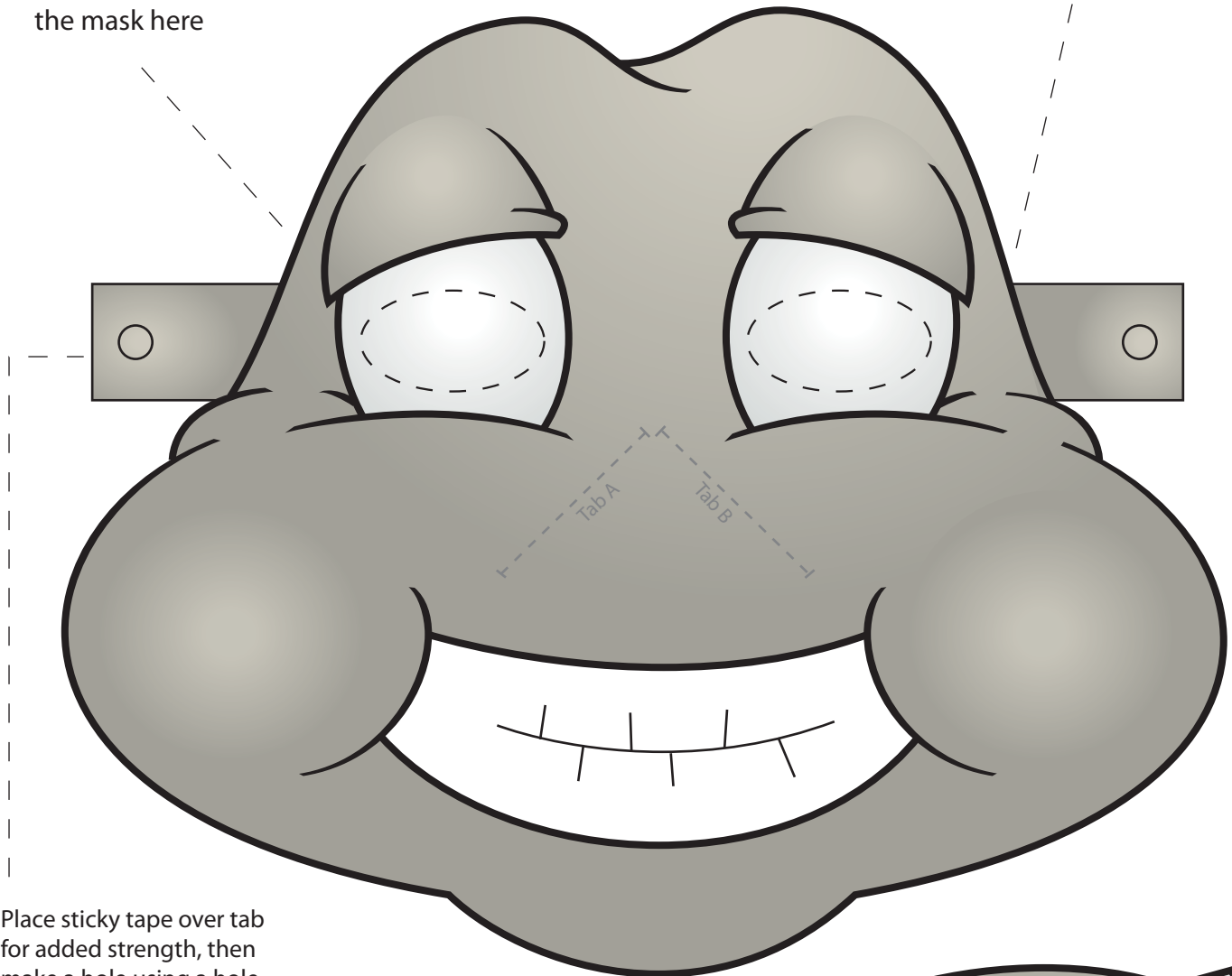


elephant mask

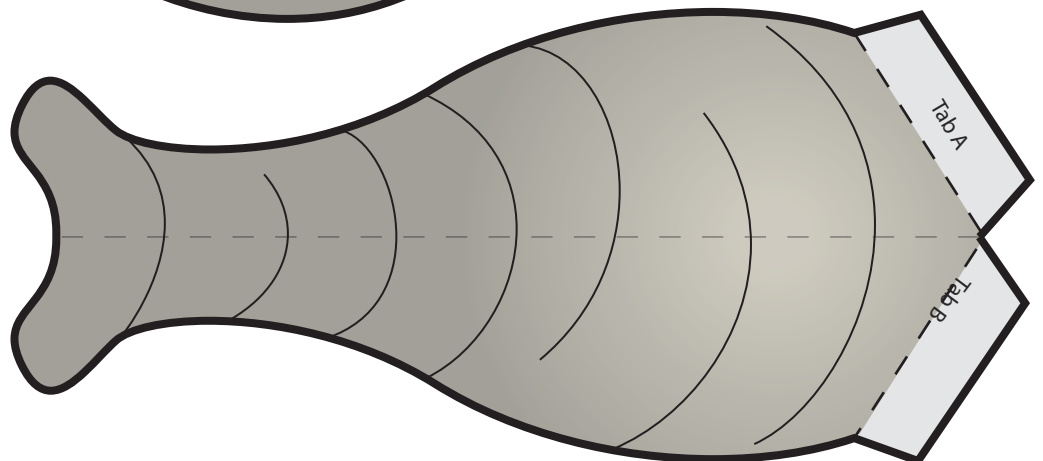
Colour in the mask then cut it out.

Page 1 of 2

Attach ears behind
the mask here



Place sticky tape over tab
for added strength, then
make a hole using a hole
punch. Tie a length of string
or elastic to each side so it
holds to child's face.



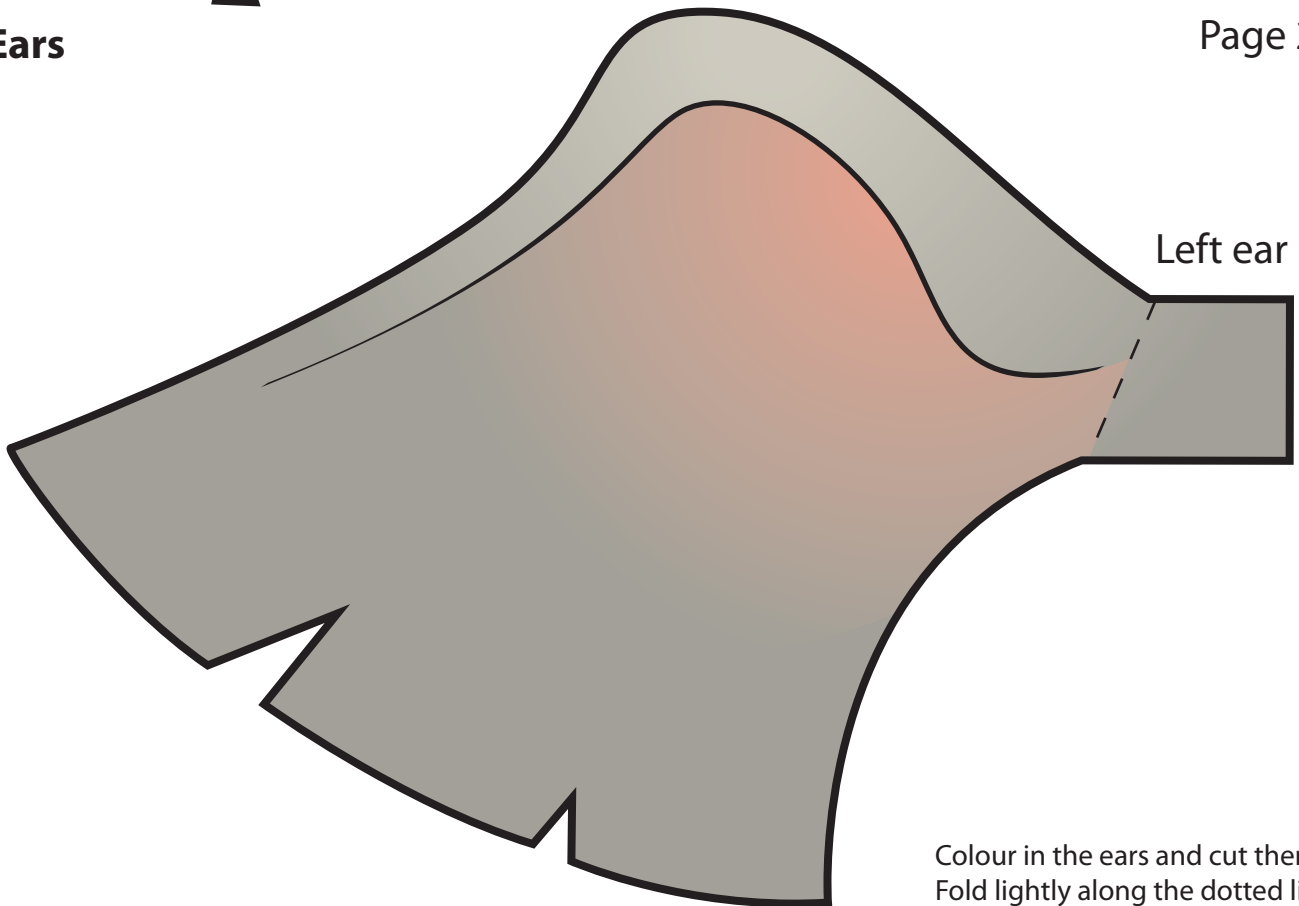
MATERIALS NEEDED

- coloured pencils
- scissors
- craft knife
- glue or sticky tape
- string or elastic

elephant mask

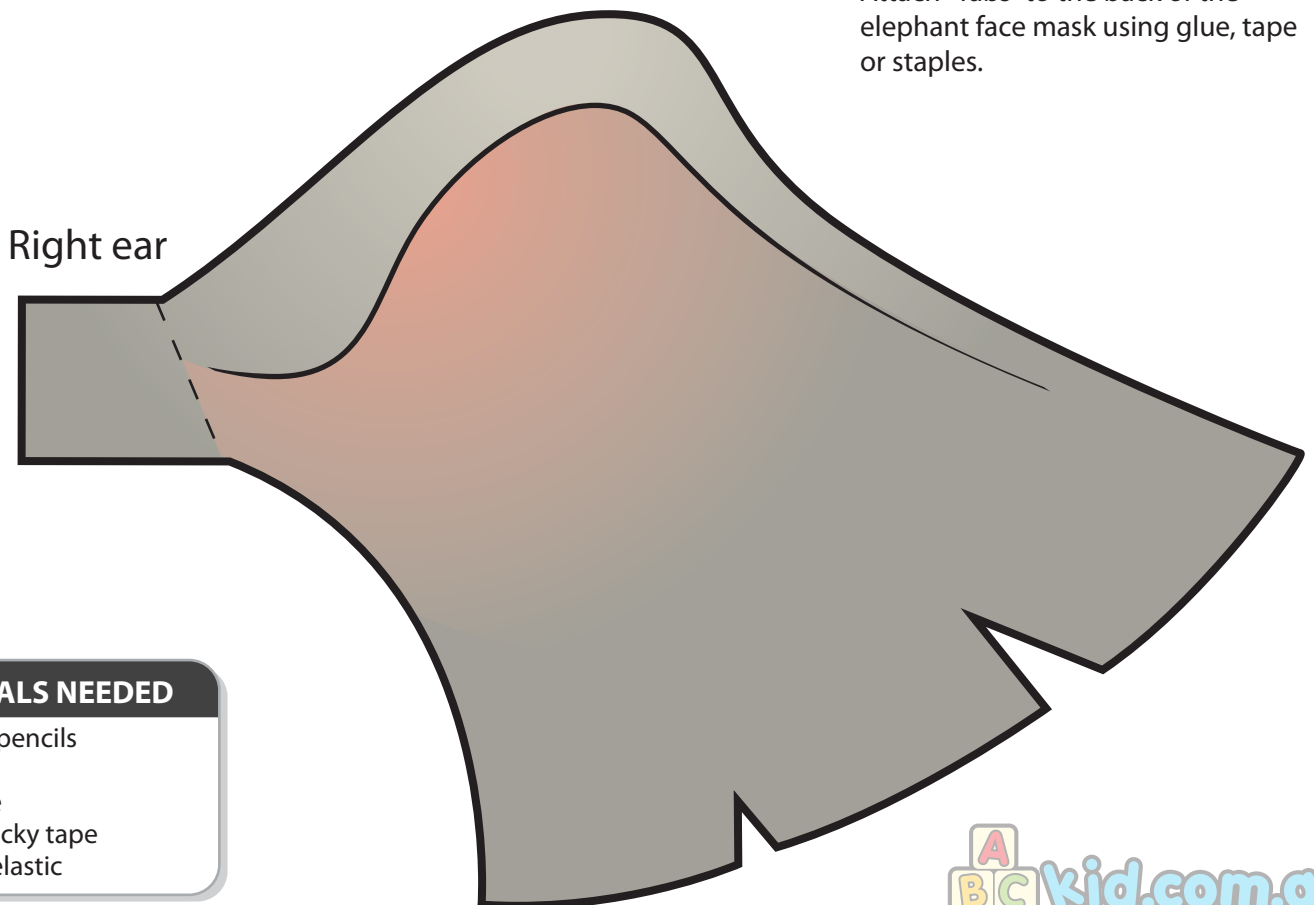
Ears

Page 2 of 2



Left ear

Colour in the ears and cut them out.
Fold lightly along the dotted lines.
Attach "Tabs" to the back of the
elephant face mask using glue, tape
or staples.



Right ear

MATERIALS NEEDED

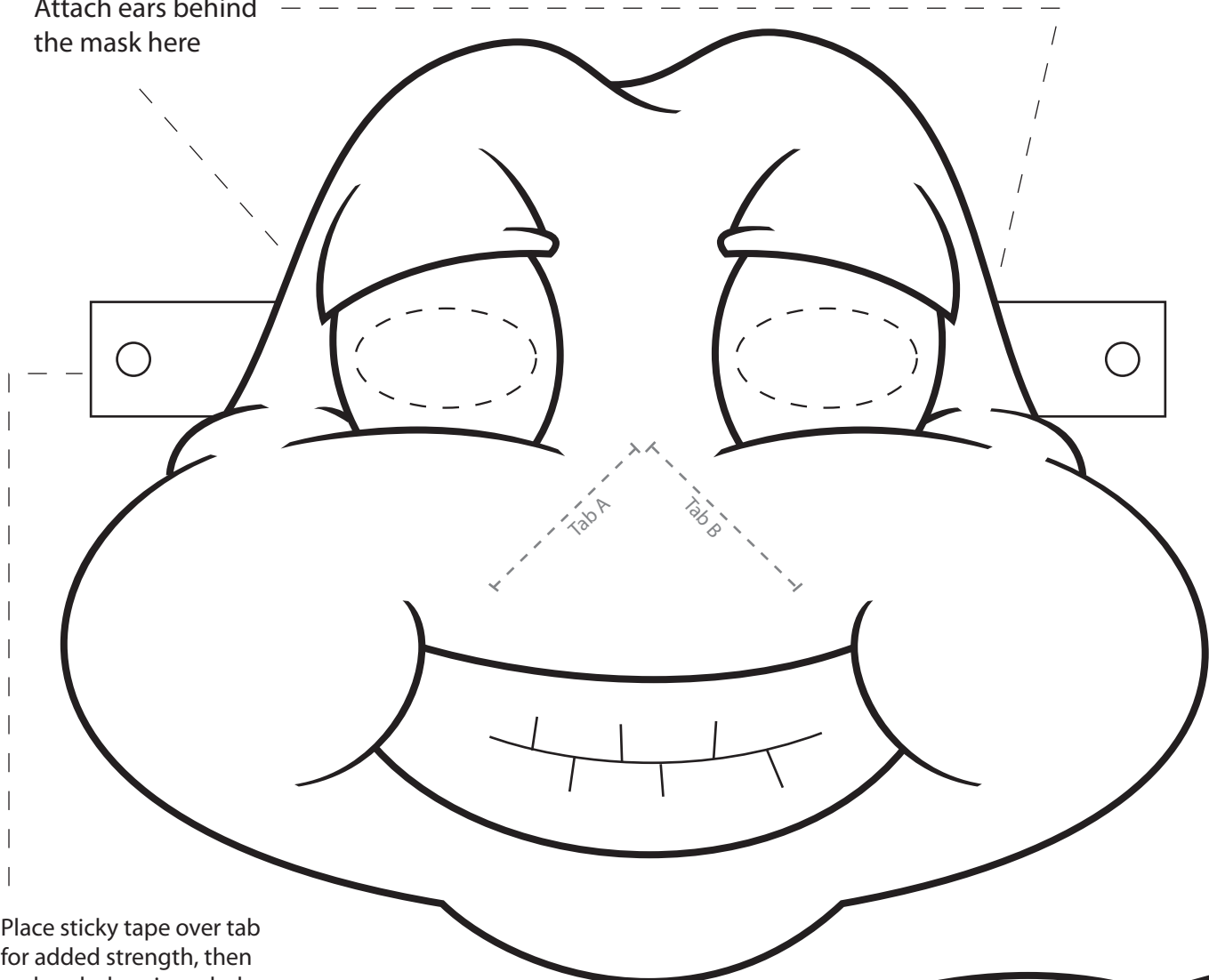
- coloured pencils
- scissors
- craft knife
- glue or sticky tape
- string or elastic

elephant mask

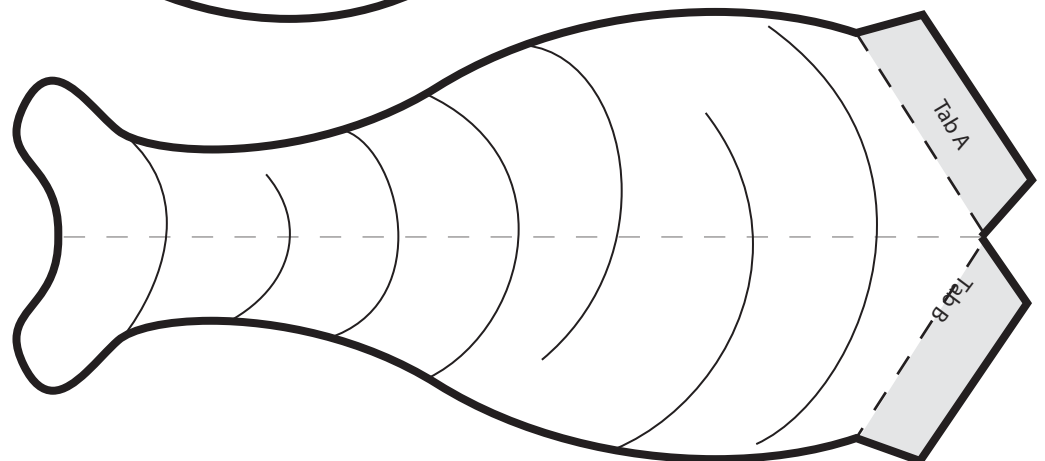
Colour in the mask then cut it out.

Page 1 of 2

Attach ears behind
the mask here



Place sticky tape over tab
for added strength, then
make a hole using a hole
punch. Tie a length of string
or elastic to each side so it
holds to child's face.



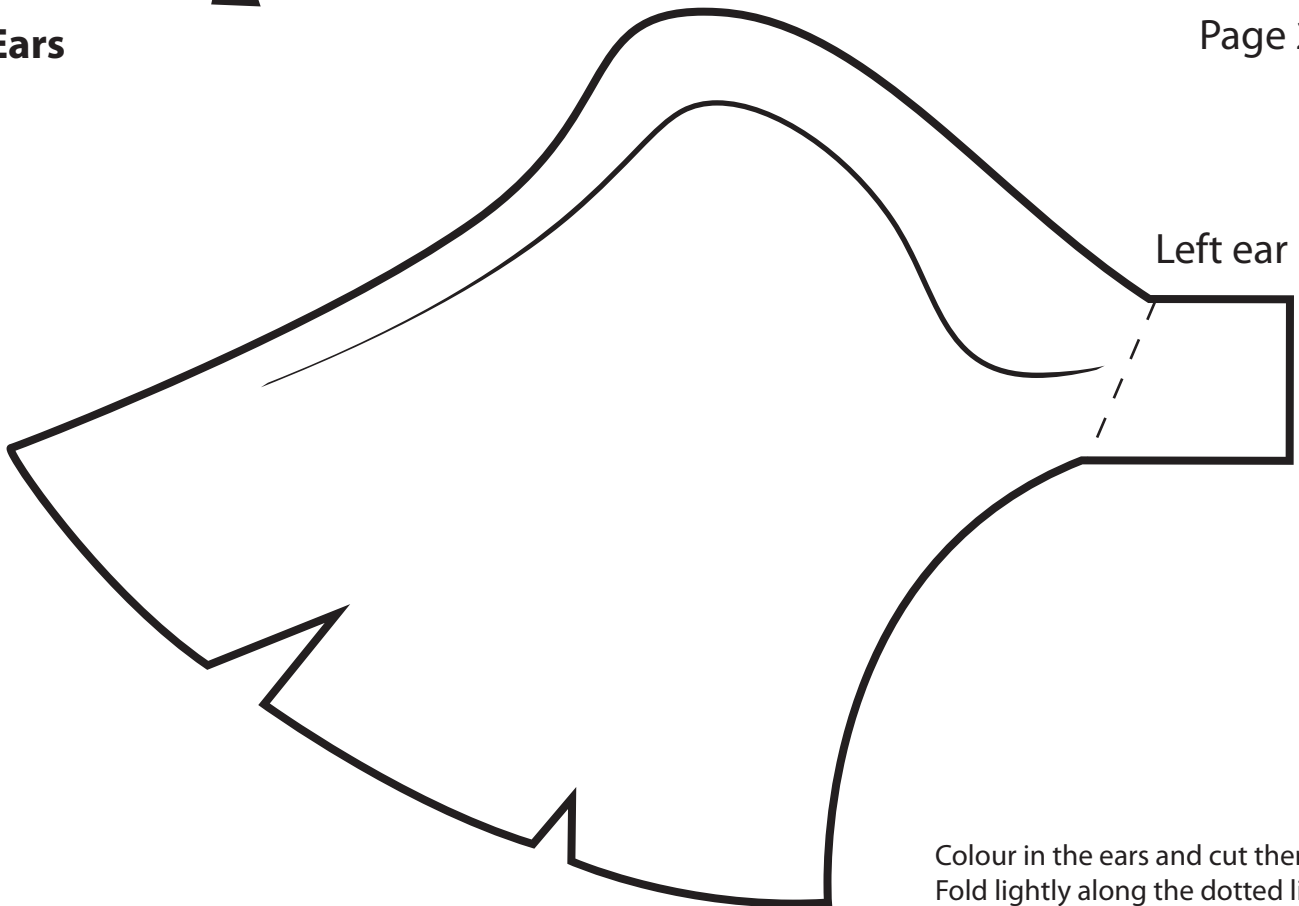
MATERIALS NEEDED

- coloured pencils
- scissors
- craft knife
- glue or sticky tape
- string or elastic

elephant mask

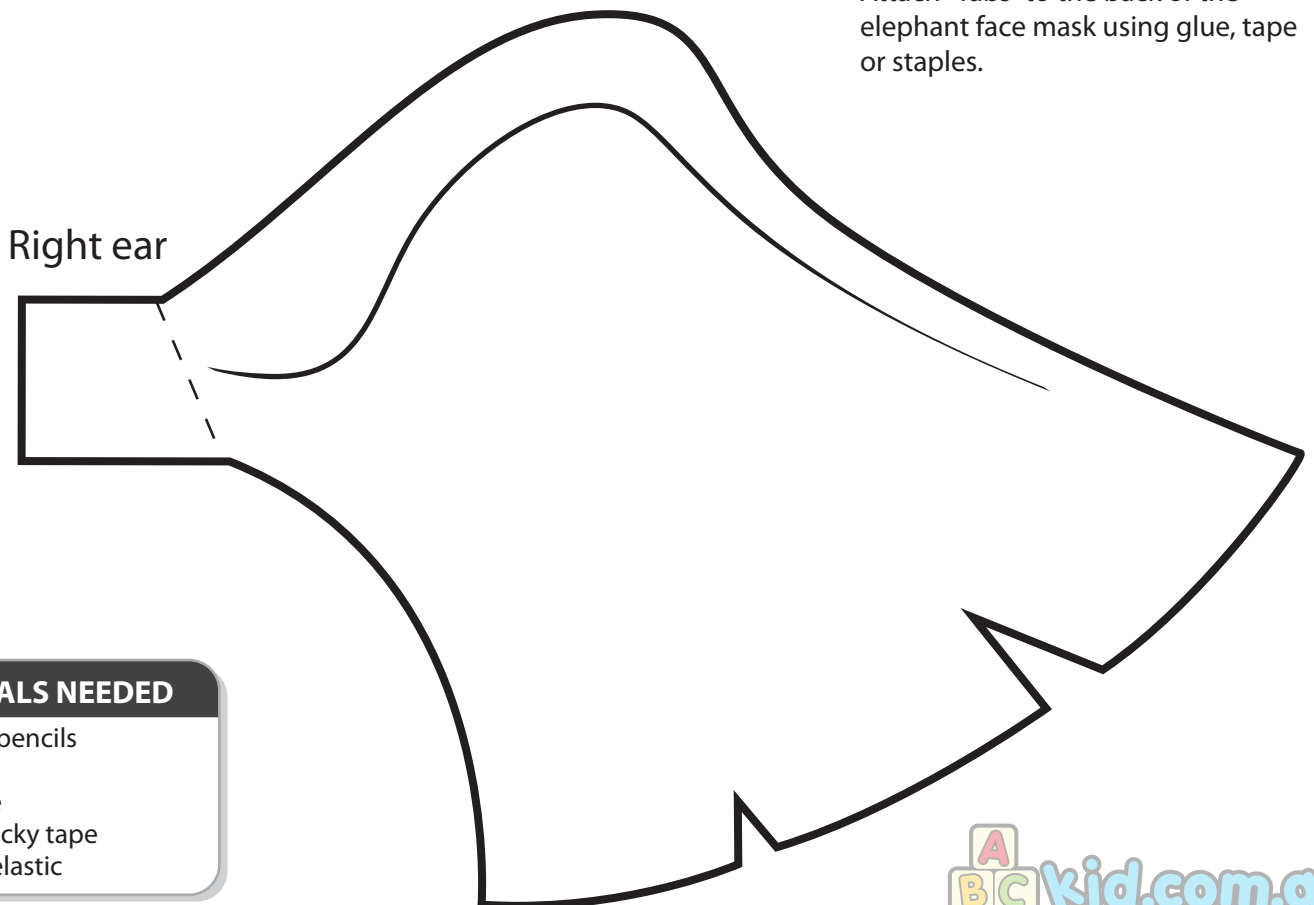
Ears

Page 2 of 2



Left ear

Colour in the ears and cut them out.
Fold lightly along the dotted lines.
Attach "Tabs" to the back of the
elephant face mask using glue, tape
or staples.



Right ear

MATERIALS NEEDED

- coloured pencils
- scissors
- craft knife
- glue or sticky tape
- string or elastic